



QUALITY FOOD SERVICE EQUIPMENT

SPECIFICATION SHEET

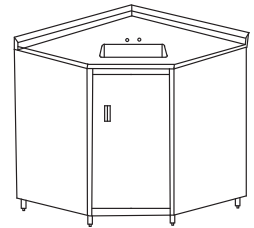
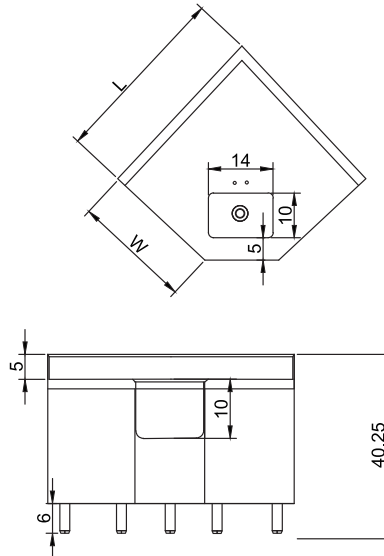
| | | | |
|-------------|-------|------|-------|
| Model #: | _____ | Qty: | _____ |
| Project #: | _____ | | |
| Consultant: | _____ | | |



CORNER SINK CABINET

enclosed front - heavy duty

DIMENSIONS



MATERIAL

- ◆ 14GA 304 stainless steel top
- ◆ 18GA 304 stainless steel base
- ◆ Stainless steel leg

FEATURES

- ◆ One 14" x 10" x 5" sink bowl on top
- ◆ Enclosed cabinet base
- ◆ Fully welded and assembled
- ◆ One hinged door
- ◆ Adjustable legs

| Model# | Bowl Size L x W x H | Length | Width |
|------------------|------------------------|--------|-------|
| TCBC-2436R5-1410 | 14" x 10" x 5" | 36" | 24" |

(609) 642-8389 | sales@nbrequipment.com | www.nbrequipment.com